

DIGITALLY PROJECTED IMAGE COMPETITION - GUIDELINES

The *Digitally Projected Image* competition category was introduced in 2008, and now forms a main competition category, alongside prints.

Images that are produced by any digital means and submitted for entry will only be allowed, providing that no other person's work appears in that image, and if proof is required, then either the original file from the camera without any modification or manipulation, or the original negative/transparency should be made available.

General conditions

- Up to two entries per member will be accepted and judged as received and viewed by the judge on computer screen or projected.
- All constituent parts of the digital image shall be the sole work of the entrant.
- Unless an entrant instructs otherwise, It is expected that all work entered into the competitions will be available for consideration for appropriate external competitions and/or Gallery promotions.
- Scanned transparencies may also be entered in the DPI section, as digital files. Members unable to scan slides are asked to make this known to the competition secretary, who will arrange for this to be carried out.
- No digital file should display a member's name.
- Prints or digital files that have previously been in a Gallery competition, either internal or external, shall be not be entered into this year's series.

Acceptable image sizes

All images will be judged within a pixel size of 1600 x 1200 to comply with the resolution of the projector.

The image format to be JPEG to ensure consistency and compatibility with the presentation software.

The following are typical sizes expected, but are variable dependent on the final image proportions chosen:-

Landscape format

4:3 aspect ratio (typical digital compact): 1600 x 1200 pixels (width x height)

3:2 aspect ratio (typical digital SLR): 1600 x 1067 pixels (width x height)

Portrait format

4:3 aspect ratio (typical digital compact): 1200 x 900 pixels (height x width)

3:2 aspect ratio (typical digital SLR): 1200 x 800 pixels (height x width)

How to prepare your images

The following is a procedure for preparing your images for submission to the digitally projected image category.

Image naming convention

All image files titles must contain the following information: -

- Gallery section: Beginner or Advanced (use B or A).
- Gallery membership number.
- Image title (try to keep it fairly short).

Use underscores between Section and Number and Title and use spaces between words in the title.

See example below...

Example: A_42_ Rough Seas

Colour Space

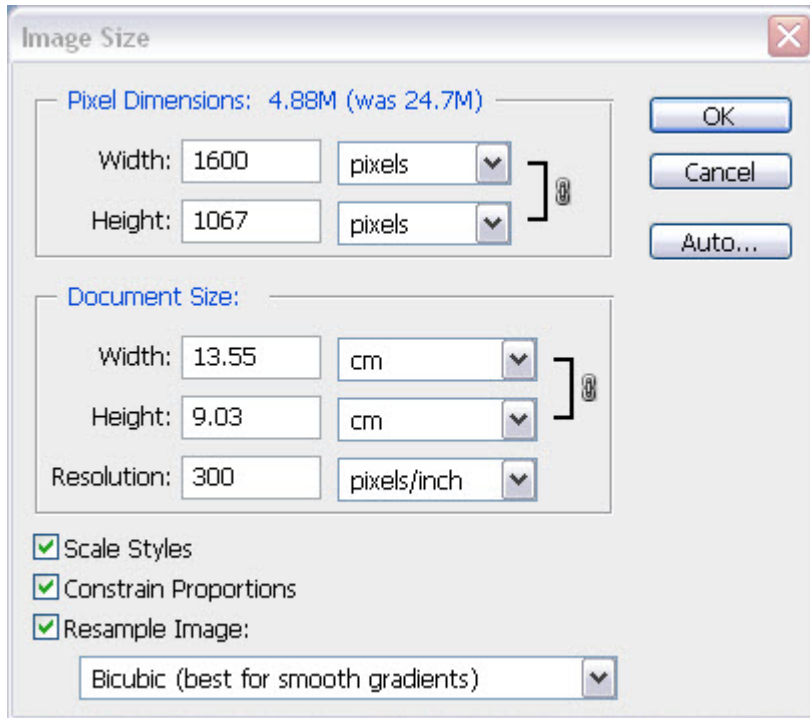
If your images are in the Adobe RGB 1998 colour space, or anything else other than sRGB, then it is recommended that you **convert** the image to sRGB in your image editing software before submitting it. If you don't, the colours are likely to come out dull and flat and will not do your entry justice.

If this means nothing to you, then chances are that you are already using sRGB as it is generally the default colour space that cameras and editors use.

Resizing your image

Firstly, you should resize your image to fit within the pixel area specified above for the particular image format and aspect ratio. This procedure is for Photoshop CS3 but it is similar for other image editing software.

1. From the **Image** menu, choose **Image Size**, the Image Size dialog box is displayed.



2. Make sure the units you have selected are **pixels** (top centre of the box).
3. Make sure the **Constrain Proportions** box is ticked. If your image is in **landscape** format, set the width to **1600** pixels. If your image is in **portrait** format, set the height to **1200** pixels. The corresponding dimension will adjust automatically.
4. Ensure that your image fits within this 1600 x 1200 boundary. Note that the resolution does not need to be changed as it is the actual pixel size that is important. (resolution is only applicable when printing). Click **OK** to resize your image.
5. It may benefit your image to be sharpened slightly at this point, as the reduction in size (ie throwing away pixels) can make the image appear slightly soft.

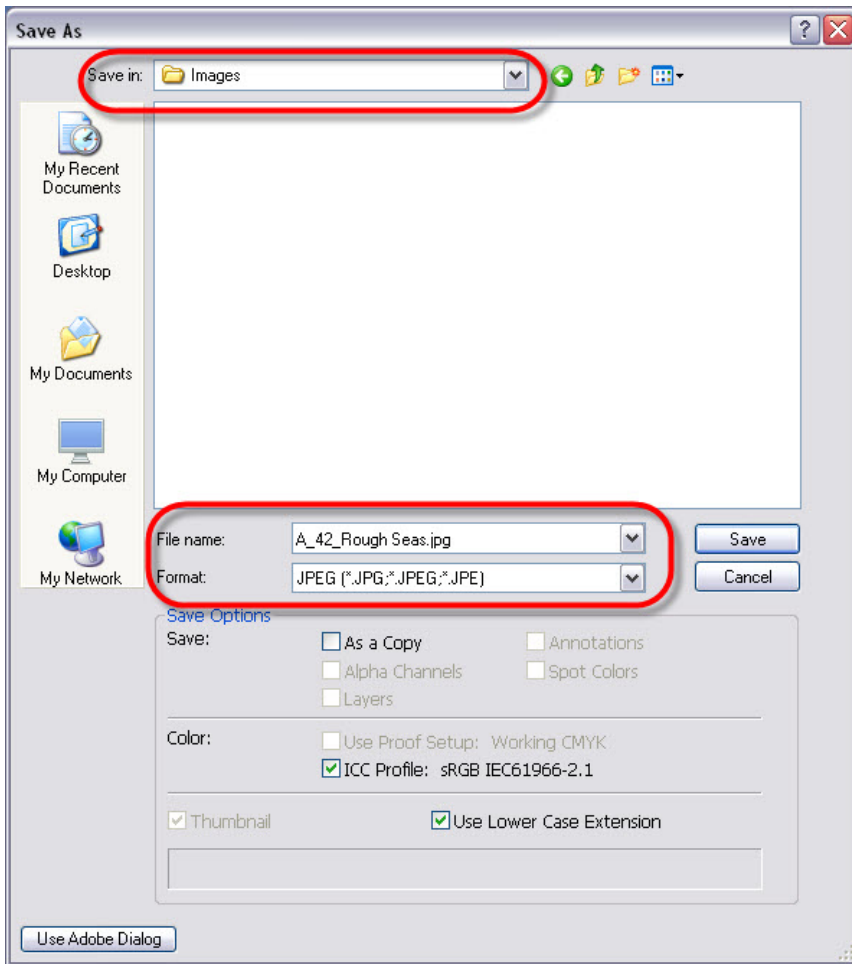
A recommended start point for these pixel sizes would be (in Photoshop) : **Amount = 100%**; **Radius = 0.7**; **Threshold = 0** but you should adjust to taste.

How to create a JPEG file using Adobe Photoshop

These instructions take you through the steps of creating a JPG file in Photoshop CS3.

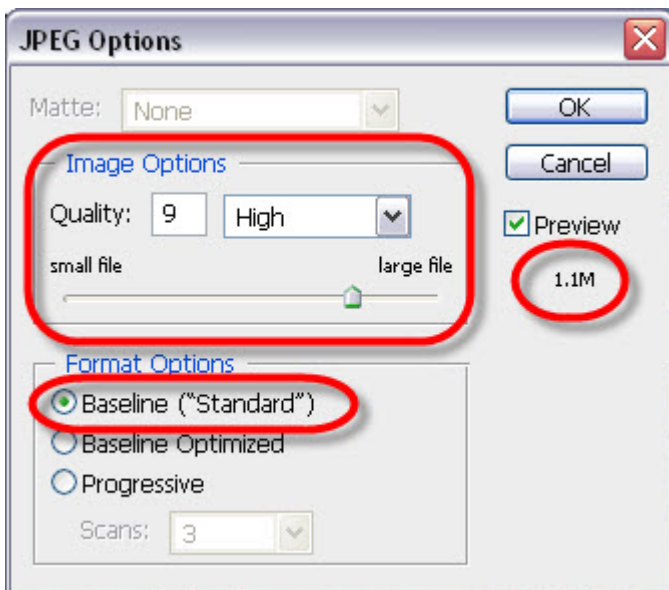
Saving the Image

1. To save a file as a JPEG file, from the **File** menu, choose **Save As**. The Save As dialog is displayed.



2. Select the folder you want to save to. Type in the correct **File name** (remember, it must show your Gallery section, membership number and the title of the image.) Please format the file name using the convention explained earlier. Next make sure the **Format** field is set to **JPEG**.

3. Click the **Save** button, you'll then see the **JPEG Options** dialog box.



4. Set the image Quality to 9 or 10 using the slider, to give a final file size that is not too large but will retain the quality of the image. Aim for around 1Mb size, visible at the RHSide of the dialogue box.

Make sure the **Format Options** is set to **Baseline ("Standard")**.

5. Click **OK**.

Final preparation for submitting

Prepare two new folders on your own Gallery USB drive – one named 'Prints' and another named 'DPI'. Copy the final file(s) into the appropriate folder(s) for your entry.

Submission

Please hand in your USB drive containing your images on the day requested in the programme at the latest. Your USB drive may be collected after the images have been judged.

Only in very exceptional cases will emailed entries be accepted, and only then following a prior arrangement with the Competition Secretary.

Entries are likely to be withdrawn if files are received late.